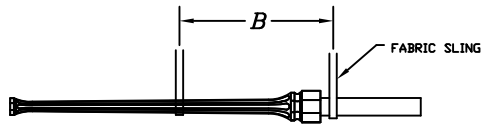


IMPORTANT! PLEASE READ BEFORE HANDLING THE POLES

- 1) Prior to unloading, inspect general condition of poles to be sure no obvious damage has occurred during shipping
- 2) Use the sketches shown below as a guide for unloading the poles. Be sure that crane straps are in good condition
- 3) Always use experienced crane operators following all safety rules
- 4) When storing poles, it is crucial that the pole is blocked up in a level position so it does not bend under its own weight (see below)
Also when storing poles for an extended period of time, over 2-3 wks, it is crucial to remove the protective packaging from around the pole. This will ensure the pole or the acrylic coating is not affected by trapped moisture.
- 5) When installing, raise pole as smoothly as possible referring to the sketches below.
- 6) Call one of our toll free numbers listed below if there are any questions or concerns

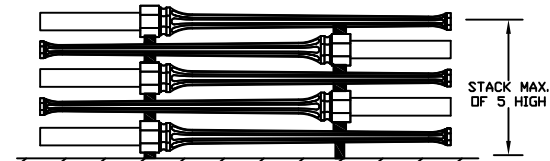
HANDLING INSTRUCTIONS FOR AMERICANA POLES 20' (OVERALL LENGTH) & SHORTER



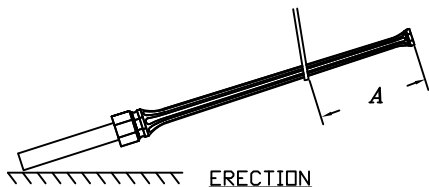
HANDLING AND UNLOADING

USE EXTRA CARE WHEN HANDLING ACRYLIC COATED POLES. STRAPS MAY DAMAGE FINISH IF NOT POSITIONED PROPERLY.

*	A	LOCATE ABOVE POINT OF BALANCE
*	B	RECOMMENDED MINIMUM 6'



POLE STORAGE



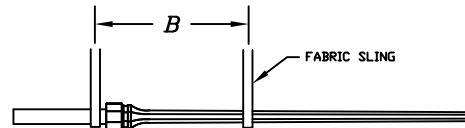
ERECTION

* WHEN HEAVY HARDWARE IS BEING ERECTED ON POLE, CONTACT MANUFACTURER FOR LOCATION OF TOP PICK-UP POINT OR REFER TO APPROVAL DRAWING FOR FACTORY INSTALLED PICK UP HOLE.

** WHEN STORING FOR ANY LENGTH OF TIME, POLES MUST BE SUPPORTED SO THAT THEY ARE NOT BENT UNDER THEIR OWN WEIGHT.

△ USE WEDGES AT ENDS OF EACH ROW TO KEEP STORAGE BUNK SECURE

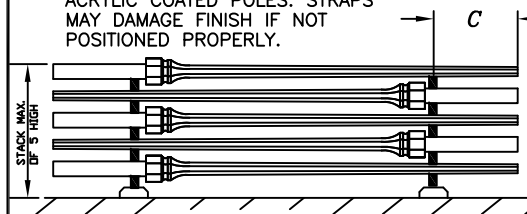
HANDLING INSTRUCTIONS FOR AMERICANA POLES 20' (OVERALL LENGTH) & LONGER



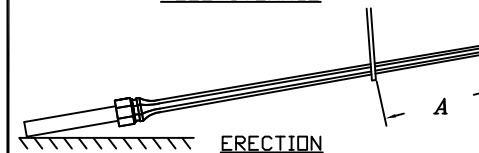
HANDLING AND UNLOADING

USE EXTRA CARE WHEN HANDLING ACRYLIC COATED POLES. STRAPS MAY DAMAGE FINISH IF NOT POSITIONED PROPERLY.

*	A	LOCATE ABOVE POINT OF BALANCE
*	B	RECOMMENDED MINIMUM 8'
**	C	25% OF POLE LENGTH



POLE STORAGE



ERECTION

* WHEN HEAVY HARDWARE IS BEING ERECTED ON POLE, CONTACT MANUFACTURER FOR LOCATION OF TOP PICK-UP POINT OR REFER TO APPROVAL DRAWING FOR FACTORY INSTALLED PICK UP HOLE.

** WHEN STORING FOR ANY LENGTH OF TIME, POLES MUST BE SUPPORTED SO THAT THEY ARE NOT BENT UNDER THEIR OWN WEIGHT.

△ USE WEDGES AT ENDS OF EACH ROW TO KEEP STORAGE BUNK SECURE



King Luminare • Stresscrete • Est. 1953
STRESSCRETE
GROUP

840 Walkers Line
Burlington, Ontario L7R 3X9
Phone 1-800-268-7809

9200 Energy Lane
Northport, Alabama 35476
Phone 1-800-435-6563

14503 Wallick Road
Atchison, Kansas 66002
Phone 1-800-837-1024