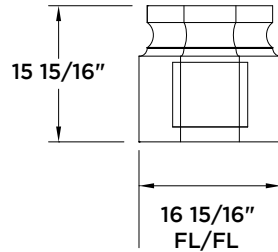
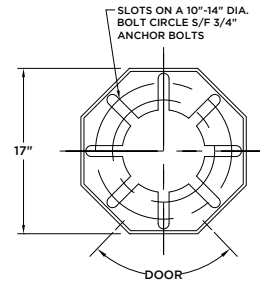


Decorative Base:



Baseplate:



Specifications:

Pole Shaft:

Available as a one-piece heavy walled cast aluminum octagonal pole with a 0.23" per foot taper.



Octagonal Cross Section

Pole Height	Tip Width (flat to flat)	Pole Weight (lbs)
10'	6 3/16"	153
12'	5 3/4"	169
14'	5 1/4"	185

Finish:

Available in textured or smooth.

Options:

- GFI** > Ground Fault Receptacle
- BA** > Banner Arms
- FPH** > Flower Pot Holder
- FH** > Flag Holder

How to Order:

POLE STYLE

KM13FC - The Community

HEIGHT OPTIONS

10', 12', 14'

KM13FC - **A** - [] - []

MATERIAL OPTIONS

A - Aluminum

PAINT COLOR

GN - Federal Green, BE - Blue, GY - Gray,
BN - Brown, BK - Black, BZ - Bronze

*Additional options available on website

2-12-2020