

FF-A // FLUTED TAPERED ALUMINUM

PEDESTRIAN METAL POLE



King Luminaire

POLE SPECIFICATIONS

MATERIAL:
Fluted Tapered Aluminum

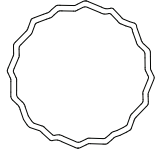
POLE HEIGHT:
10' - 18'

OPTIONS:
GFI - Ground Fault Receptacle
BA - Banner Arms
FPH - Flower Pot Holder
FH - Flag Holder

ALLOY:
5052-H32

FINISH:
Available in textured or smooth.

CROSS SECTION:

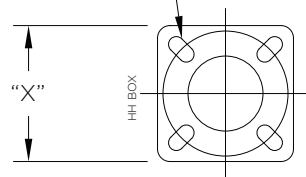


Fluted Tapered (FF)

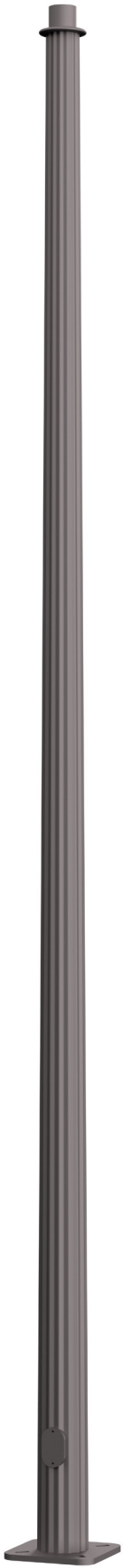
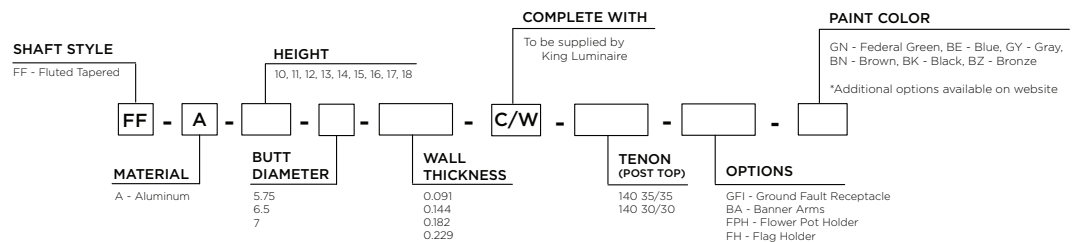
BASEPLATE DETAILS

Pole		Baseplate			Bolt Circle		Anchor Bolts	
Butt Diameter (in)	Wall Thickness (in)	"X" Square (in)	Thickness (in)	Corner Radius (in)	"Y" Dia (in)	+/- (in)	Dia x Length x Hook (in)	Projection (in)
5.75	0.091	11.25	0.5	1.75	10	1	0.75 x 27 x 3.75	3
5.75	0.144	11.25	0.75	1.75	10	1	0.75 x 27 x 3.75	3.25
5.75	0.182	11.25	0.75	1.75	10	1	0.75 x 27 x 3.75	3.25
5.75	0.229	11.25	0.75	1.75	10	1	0.75 x 27 x 3.75	3.25
6.5	0.091	12.0625	0.75	1.75	11	1	0.75 x 27 x 3.75	3.25
6.5	0.144	12.0625	0.75	1.75	11	1	0.75 x 27 x 3.75	3.25
6.5	0.182	12.0625	0.75	1.75	11	1	0.75 x 27 x 3.75	3.25
6.5	0.229	12.0625	0.75	1.75	11	1	0.75 x 27 x 3.75	3.25
7	0.091	12.0625	0.75	1.75	11	0.75	0.75 x 27 x 3.75	3.25
7	0.144	12.0625	0.75	1.75	11	0.75	0.75 x 27 x 3.75	3.25
7	0.182	12.0625	0.75	1.75	11	0.75	0.75 x 27 x 3.75	3.25
7	0.229	12.0625	0.75	1.75	11	0.75	0.75 x 27 x 3.75	3.25

SLOTS ON A "Y" DIA. BOLT CIRCLE



HOW TO ORDER



SHAFT DETAILS

FF-A PEDESTRIAN METAL POLE

FF ALUMINUM // Pole Details

Nominal Mounting Height (ft)	Catalog Code	Alloy	Butt (in)	Tip (in)	Wall Thickness (in)	Handhole	Wt. (lbs) *
10	FF-A-10-5.75-0.091	5052-H32	5.75	4.35	0.091	3" x 5" Reinforced (MIN 9" AG)	23
	FF-A-10-5.75-0.144	5052-H32	5.75	4.35	0.144	3" x 5" Reinforced (MIN 9" AG)	35
	FF-A-10-5.75-0.182	5052-H32	5.75	4.35	0.182	3" x 5" Reinforced (MIN 9" AG)	41
	FF-A-10-5.75-0.229	5052-H32	5.75	4.35	0.229	3" x 5" Reinforced (MIN 9" AG)	49
	FF-A-10-6.5-0.091	5052-H32	6.5	5.1	0.091	3" x 5" Reinforced (MIN 14" AG)	30
	FF-A-10-6.5-0.144	5052-H32	6.5	5.1	0.144	3" x 5" Reinforced (MIN 14" AG)	40
	FF-A-10-6.5-0.182	5052-H32	6.5	5.1	0.182	3" x 5" Reinforced (MIN 14" AG)	48
	FF-A-10-6.5-0.229	5052-H32	6.5	5.1	0.229	3" x 5" Reinforced (MIN 14" AG)	57
11	FF-A-11-5.75-0.091	5052-H32	5.75	4.21	0.091	3" x 5" Reinforced (MIN 9" AG)	24
	FF-A-11-5.75-0.144	5052-H32	5.75	4.21	0.144	3" x 5" Reinforced (MIN 9" AG)	37
	FF-A-11-5.75-0.182	5052-H32	5.75	4.21	0.182	3" x 5" Reinforced (MIN 9" AG)	44
	FF-A-11-5.75-0.229	5052-H32	5.75	4.21	0.229	3" x 5" Reinforced (MIN 9" AG)	53
	FF-A-11-6.5-0.091	5052-H32	6.5	4.96	0.091	3" x 5" Reinforced (MIN 14" AG)	31
	FF-A-11-6.5-0.144	5052-H32	6.5	4.96	0.144	3" x 5" Reinforced (MIN 14" AG)	43
	FF-A-11-6.5-0.182	5052-H32	6.5	4.96	0.182	3" x 5" Reinforced (MIN 14" AG)	51
	FF-A-11-6.5-0.229	5052-H32	6.5	4.96	0.229	3" x 5" Reinforced (MIN 14" AG)	61
12	FF-A-12-5.75-0.091	5052-H32	5.75	4.07	0.091	3" x 5" Reinforced (MIN 9" AG)	25
	FF-A-12-5.75-0.144	5052-H32	5.75	4.07	0.144	3" x 5" Reinforced (MIN 9" AG)	39
	FF-A-12-5.75-0.182	5052-H32	5.75	4.07	0.182	3" x 5" Reinforced (MIN 9" AG)	47
	FF-A-12-5.75-0.229	5052-H32	5.75	4.07	0.229	3" x 5" Reinforced (MIN 9" AG)	56
	FF-A-12-6.5-0.091	5052-H32	6.5	4.82	0.091	3" x 5" Reinforced (MIN 14" AG)	33
	FF-A-12-6.5-0.144	5052-H32	6.5	4.82	0.144	3" x 5" Reinforced (MIN 14" AG)	45
	FF-A-12-6.5-0.182	5052-H32	6.5	4.82	0.182	3" x 5" Reinforced (MIN 14" AG)	54
	FF-A-12-6.5-0.229	5052-H32	6.5	4.82	0.229	3" x 5" Reinforced (MIN 14" AG)	64
13	FF-A-13-6.5-0.091	5052-H32	6.5	4.68	0.091	3" x 5" Reinforced (MIN 14" AG)	35
	FF-A-13-6.5-0.144	5052-H32	6.5	4.68	0.144	3" x 5" Reinforced (MIN 14" AG)	48
	FF-A-13-6.5-0.182	5052-H32	6.5	4.68	0.182	3" x 5" Reinforced (MIN 14" AG)	57
	FF-A-13-6.5-0.229	5052-H32	6.5	4.68	0.229	3" x 5" Reinforced (MIN 14" AG)	68
14	FF-A-14-6.5-0.091	5052-H32	6.5	4.54	0.091	3" x 5" Reinforced (MIN 14" AG)	36
	FF-A-14-6.5-0.144	5052-H32	6.5	4.54	0.144	3" x 5" Reinforced (MIN 14" AG)	50
	FF-A-14-6.5-0.182	5052-H32	6.5	4.54	0.182	3" x 5" Reinforced (MIN 14" AG)	60
	FF-A-14-6.5-0.229	5052-H32	6.5	4.54	0.229	3" x 5" Reinforced (MIN 14" AG)	72
	FF-A-14-7-0.091	5052-H32	7	5.04	0.091	3" x 5" Reinforced (MIN 14" AG)	38
	FF-A-14-7-0.144	5052-H32	7	5.04	0.144	3" x 5" Reinforced (MIN 14" AG)	54
	FF-A-14-7-0.182	5052-H32	7	5.04	0.182	3" x 5" Reinforced (MIN 14" AG)	64
	FF-A-14-7-0.229	5052-H32	7	5.04	0.229	3" x 5" Reinforced (MIN 14" AG)	77
15	FF-A-15-6.5-0.144	5052-H32	6.5	4.4	0.144	3" x 5" Reinforced (MIN 14" AG)	52
	FF-A-15-6.5-0.182	5052-H32	6.5	4.4	0.182	3" x 5" Reinforced (MIN 14" AG)	63
	FF-A-15-6.5-0.229	5052-H32	6.5	4.4	0.229	3" x 5" Reinforced (MIN 14" AG)	75
	FF-A-15-7-0.091	5052-H32	7	4.9	0.091	3" x 5" Reinforced (MIN 14" AG)	40
	FF-A-15-7-0.144	5052-H32	7	4.9	0.144	3" x 5" Reinforced (MIN 14" AG)	56
	FF-A-15-7-0.182	5052-H32	7	4.9	0.182	3" x 5" Reinforced (MIN 14" AG)	67
	FF-A-15-7-0.229	5052-H32	7	4.9	0.229	3" x 5" Reinforced (MIN 14" AG)	81

FF-A PEDESTRIAN METAL POLE

FF ALUMINUM // Pole Details

Nominal Mounting Height (ft)	Catalog Code	Alloy	Butt (in)	Tip (in)	Wall Thickness (in)	Handhole	Wt. (lbs) *
16	FF-A-16-6.5-0.144	5052-H32	6.5	4.26	0.144	3" x 5" Reinforced (MIN 14" AG)	54
	FF-A-16-6.5-0.182	5052-H32	6.5	4.26	0.182	3" x 5" Reinforced (MIN 14" AG)	65
	FF-A-16-6.5-0.229	5052-H32	6.5	4.26	0.229	3" x 5" Reinforced (MIN 14" AG)	79
	FF-A-16-7-0.091	5052-H32	7	4.76	0.091	3" x 5" Reinforced (MIN 14" AG)	41
	FF-A-16-7-0.144	5052-H32	7	4.76	0.144	3" x 5" Reinforced (MIN 14" AG)	58
	FF-A-16-7-0.182	5052-H32	7	4.76	0.182	3" x 5" Reinforced (MIN 14" AG)	70
	FF-A-16-7-0.229	5052-H32	7	4.76	0.229	3" x 5" Reinforced (MIN 14" AG)	85
17	FF-A-17-6.5-0.144	5052-H32	6.5	4.12	0.144	3" x 5" Reinforced (MIN 14" AG)	56
	FF-A-17-6.5-0.182	5052-H32	6.5	4.12	0.182	3" x 5" Reinforced (MIN 14" AG)	68
	FF-A-17-6.5-0.229	5052-H32	6.5	4.12	0.229	3" x 5" Reinforced (MIN 14" AG)	82
	FF-A-17-7-0.144	5052-H32	7	4.62	0.144	3" x 5" Reinforced (MIN 14" AG)	61
	FF-A-17-7-0.182	5052-H32	7	4.62	0.182	3" x 5" Reinforced (MIN 14" AG)	73
	FF-A-17-7-0.229	5052-H32	7	4.62	0.229	3" x 5" Reinforced (MIN 14" AG)	89
18	FF-A-18-7-0.144	5052-H32	7	4.48	0.144	3" x 5" Reinforced (MIN 14" AG)	63
	FF-A-18-7-0.182	5052-H32	7	4.48	0.182	3" x 5" Reinforced (MIN 14" AG)	76
	FF-A-18-7-0.229	5052-H32	7	4.48	0.229	3" x 5" Reinforced (MIN 14" AG)	92

* Weight includes the pole shaft and baseplate.

SHAFT LOADING

FF ALUMINUM // Loading

Nominal Mounting Height (ft)	Catalog Code	Design Information // AASHTO LTS-6, Latest Revision **									
		90 MPH		100 MPH		110 MPH		120 MPH		150 MPH	
		Max EPA (sq ft)	Max Load (lbs)	Max EPA (sq ft)	Max Load (lbs)	Max EPA (sq ft)	Max Load (lbs)	Max EPA (sq ft)	Max Load (lbs)	Max EPA (sq ft)	Max Load (lbs)
10	FF-A-10-5.75-0.091	4.7	200	3.5	200	2.7	200	2.2	200	1.2	200
	FF-A-10-5.75-0.144	8.6	200	6.6	200	5.3	200	4.4	200	2.6	200
	FF-A-10-5.75-0.182	10.1	300	8.0	200	6.5	200	5.3	200	3.2	200
	FF-A-10-5.75-0.229	11.6	300	9.2	200	7.4	200	6.1	200	3.7	200
	FF-A-10-6.5-0.091	6.6	200	5.2	200	4.2	200	3.4	200	2.0	200
	FF-A-10-6.5-0.144	11.6	300	9.3	200	7.6	200	6.3	200	3.8	200
	FF-A-10-6.5-0.182	14.6	300	11.8	300	9.7	200	8.1	200	5.0	200
	FF-A-10-6.5-0.229	16.8	300	13.5	300	11.0	300	9.2	200	5.7	200
11	FF-A-11-5.75-0.091	3.8	200	2.7	200	2.0	200	1.6	200	0.8	200
	FF-A-11-5.75-0.144	7.4	200	5.6	200	4.4	200	3.6	200	2.1	200
	FF-A-11-5.75-0.182	8.8	200	6.8	200	5.4	200	4.4	200	2.6	200
	FF-A-11-5.75-0.229	10.0	300	7.9	200	6.3	200	5.2	200	3.1	200
	FF-A-11-6.5-0.091	5.5	200	4.3	200	3.4	200	2.8	200	1.5	200
	FF-A-11-6.5-0.144	10.0	300	8.0	200	6.5	200	5.4	200	3.2	200
	FF-A-11-6.5-0.182	12.7	300	10.1	300	8.3	200	6.9	200	4.2	200
	FF-A-11-6.5-0.229	14.7	300	11.7	300	9.7	200	8.0	200	4.9	200
12	FF-A-12-5.75-0.091	3.1	200	2.1	200	1.5	200	1.1	200	0.5	200
	FF-A-12-5.75-0.144	6.4	200	4.8	200	3.7	200	2.9	200	1.6	200
	FF-A-12-5.75-0.182	7.6	200	5.8	200	4.5	200	3.7	200	2.1	200
	FF-A-12-5.75-0.229	8.8	200	6.8	200	5.3	200	4.4	200	2.6	200
	FF-A-12-6.5-0.091	4.5	200	3.5	200	2.7	200	2.2	200	1.2	200
	FF-A-12-6.5-0.144	8.9	200	6.9	200	5.6	200	4.6	200	2.7	200
	FF-A-12-6.5-0.182	11.0	200	8.9	200	7.2	200	5.9	200	3.6	200
	FF-A-12-6.5-0.229	12.8	300	10.2	300	8.4	200	6.9	200	4.2	200

FF-A PEDESTRIAN METAL POLE

FF ALUMINUM // Loading

Nominal Mounting Height (ft)	Catalog Code	Design Information // AASHTO LTS-6, Latest Revision **									
		90 MPH		100 MPH		110 MPH		120 MPH		150 MPH	
		Max EPA (sq ft)	Max Load (lbs)	Max EPA (sq ft)	Max Load (lbs)	Max EPA (sq ft)	Max Load (lbs)	Max EPA (sq ft)	Max Load (lbs)	Max EPA (sq ft)	Max Load (lbs)
13	FF-A-13-6.5-0.091	3.8	200	2.8	200	2.1	200	1.7	200	0.8	200
	FF-A-13-6.5-0.144	7.7	200	6.0	200	4.8	200	3.9	200	2.2	200
	FF-A-13-6.5-0.182	9.8	200	7.7	200	6.2	200	5.1	200	3.0	200
	FF-A-13-6.5-0.229	11.3	300	9.0	200	7.3	200	6.0	200	3.6	200
14	FF-A-14-6.5-0.091	3.1	200	2.1	200	1.6	200	1.2	200	0.5	200
	FF-A-14-6.5-0.144	6.7	200	5.1	200	4.0	200	3.2	200	1.8	200
	FF-A-14-6.5-0.182	8.6	200	6.6	200	5.3	200	4.3	200	2.5	200
	FF-A-14-6.5-0.229	9.9	200	7.8	200	6.3	200	5.2	200	3.1	200
	FF-A-14-7-0.091	4.1	200	3.1	200	2.4	200	1.9	200	0.9	200
	FF-A-14-7-0.144	8.4	200	6.6	200	5.3	200	4.3	200	2.5	200
	FF-A-14-7-0.182	10.6	300	8.5	200	6.9	200	5.7	200	3.4	200
	FF-A-14-7-0.229	12.4	300	9.9	200	8.0	200	6.6	200	4.0	200
15	FF-A-15-6.5-0.144	5.8	200	4.3	200	3.4	200	2.7	200	1.4	200
	FF-A-15-6.5-0.182	7.5	200	5.7	200	4.5	200	3.7	200	2.1	200
	FF-A-15-6.5-0.229	8.9	200	6.9	200	5.5	200	4.4	200	2.6	200
	FF-A-15-7-0.091	3.4	200	2.5	200	1.9	200	1.4	200	0.6	200
	FF-A-15-7-0.144	7.3	200	5.7	200	4.5	200	3.6	200	2.0	200
	FF-A-15-7-0.182	9.5	200	7.5	200	6.0	200	4.9	200	2.9	200
	FF-A-15-7-0.229	11.1	300	8.8	200	7.1	200	5.8	200	3.4	200
16	FF-A-16-6.5-0.144	5.0	200	3.6	200	2.7	200	2.1	200	1.1	200
	FF-A-16-6.5-0.182	6.6	200	4.9	200	3.8	200	3.0	200	1.7	200
	FF-A-16-6.5-0.229	7.9	200	6.0	200	4.7	200	3.8	200	2.1	200
	FF-A-16-7-0.091	2.7	200	1.9	200	1.3	200	1.0	200	-	-
	FF-A-16-7-0.144	6.4	200	4.9	200	3.8	200	3.1	200	1.7	200
	FF-A-16-7-0.182	8.4	200	6.5	200	5.2	200	4.2	200	2.4	200
	FF-A-16-7-0.229	9.9	200	7.8	200	6.3	200	5.1	200	3.0	200
	17	FF-A-17-6.5-0.144	4.2	200	2.9	200	2.1	200	1.6	200	0.7
FF-A-17-6.5-0.182		5.7	200	4.1	200	3.1	200	2.5	200	1.3	200
FF-A-17-6.5-0.229		6.9	200	5.1	200	3.9	200	3.1	200	1.7	200
FF-A-17-7-0.144		5.5	200	4.1	200	3.2	200	2.5	200	1.3	200
FF-A-17-7-0.182		7.3	200	5.6	200	4.4	200	3.6	200	2.0	200
FF-A-17-7-0.229		8.8	200	6.8	200	5.4	200	4.4	200	2.5	200
18	FF-A-18-7-0.144	4.7	200	3.4	200	2.6	200	2.0	200	0.9	200
	FF-A-18-7-0.182	6.4	200	4.7	200	3.7	200	2.9	200	1.6	200
	FF-A-18-7-0.229	7.8	200	5.9	200	4.7	200	3.7	200	2.1	200

** EPA represents the Effective Projected Area of the attachments on the pole. Designs are limited to post top luminaires or attachments located at or below the mounting height. Consult factory for poles supporting attachments located above the mounting height.

BASE COMPATIBILITY

FF-A PEDESTRIAN METAL POLE

Pole Butt Size	Split Bases								
	KSB10	KSB11	KSB16	KSB19	KSB20	KSB52	KSB70	KSB76	KSB77
5.75	Compatible	Incompatible	Compatible	Compatible	Incompatible	Compatible	Compatible	Incompatible	Incompatible
6.5	Incompatible	Compatible	Compatible	Compatible	Compatible	Compatible	Compatible	Compatible	Compatible
7	Incompatible	Incompatible	Compatible	Compatible	Incompatible	Incompatible	Compatible	Incompatible	Compatible

06-04-2024