

THE GARRISON // SECURITY BOLLARD



StressCrete has developed a security bollard solution without sacrificing any aesthetic beauty. Engineered using Finite Element Analysis to resist the impact of a 5,070 lb pickup truck travelling at 50 mph., the Garrison security bollard is based aesthetically on the standard Silhouette bollards allowing for a seamless transition from decorative to security bollards without drawing attention.

SPECIFICATIONS

MATERIAL:

Concrete with pre-engineered steel core

BOLLARD STYLE:

Nonlighted Security

MOUNTING TYPE:

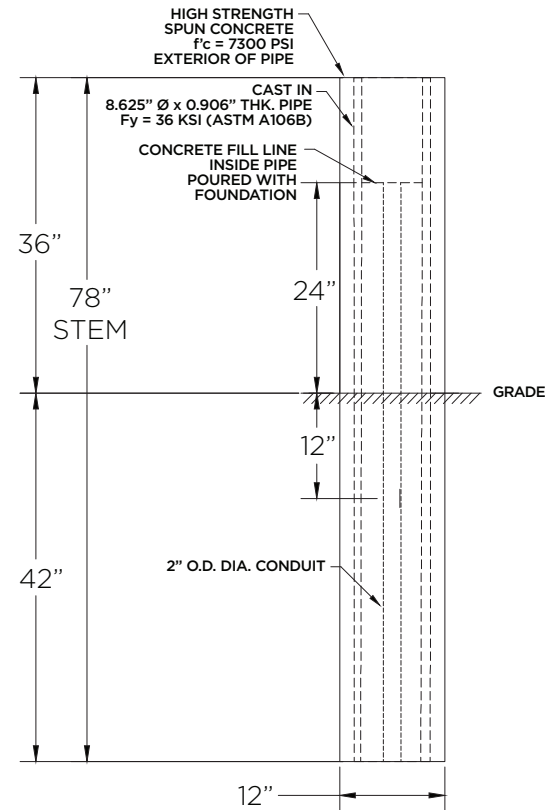
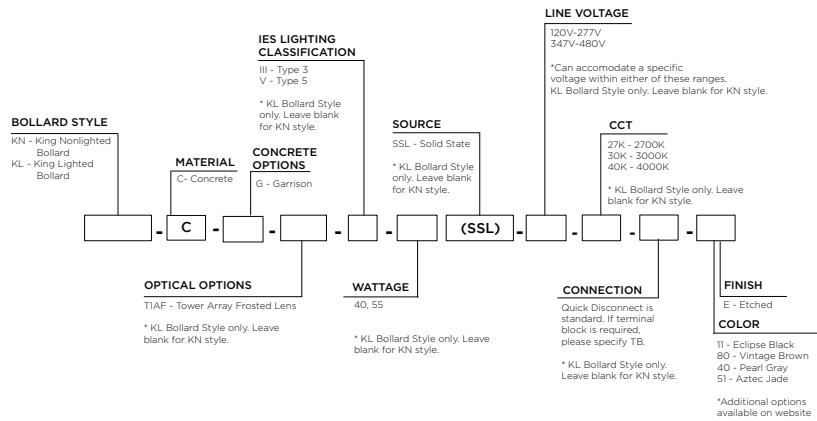
Direct embed in engineered foundation.

Minimum array of 2 bollards

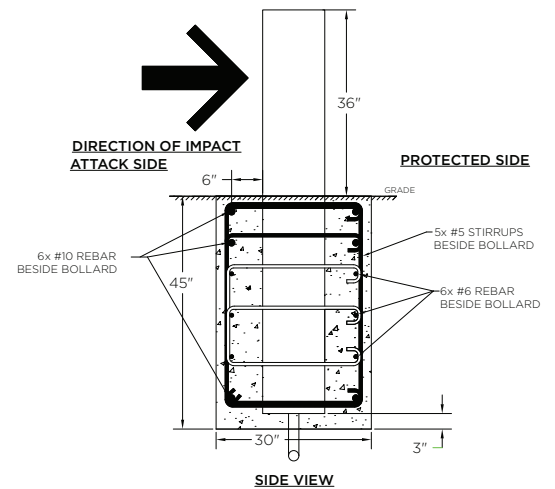
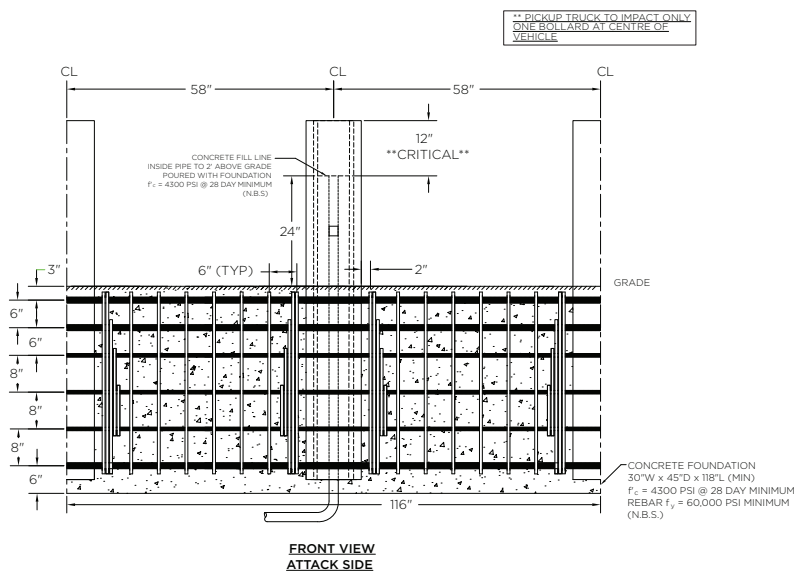
FINISH:

Available in etched.

HOW TO ORDER



FOUNDATION DETAILS:



PU50 P1 is the designation based on ASTM F2656 standard. PU50 is a pick up truck weighing 5070 lb travelling at 50 mph. P1 is the penetration rating which states that the bollard stops the vehicle within 3.3 ft. All backfill shall be in compliance with the requirements of ASTM F2656 Standard Test Method for Crash Testing of Vehicular Security Barriers section 7.2.2. If the existing soil conditions are not in conformance with the requirements of ASTM F2656 section 7.2.2, then the existing soil shall be replaced with soil meeting the requirements.