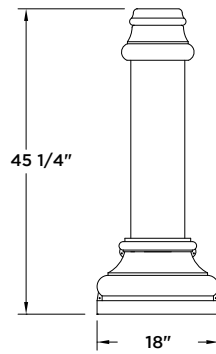
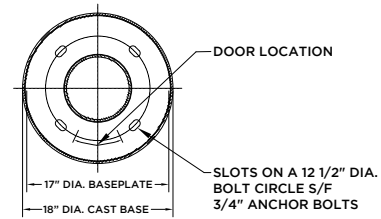


Decorative Base Cover:



Baseplate:



Specifications:

Pole Shaft Options:

Available as Fluted Extruded (FE) 16 flute non-tapered in aluminum, and Round Extruded (RE) non-tapered in aluminum.



Fluted Extruded (FE)



Round Extruded (RE)

Decorative Base Cover:

Cast aluminum clam shell with maximum shaft opening of 5.75".

Base Weight*:

24 lbs

*Consult Shaft Detail Charts below for pole shaft weight

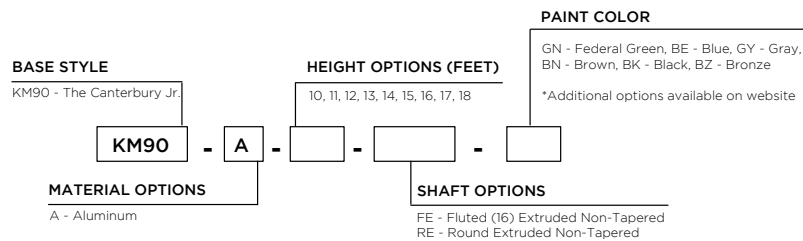
Options:

- GFI** > Ground Fault Receptacle
- BA** > Banner Arms
- FPH** > Flower Pot Holder
- FH** > Flag Holder

Finish:

Available in textured or smooth.

How to Order:



FE ALUMINUM // Shaft Details

Catalog Number	Ht. (ft)	Butt (in)	Tip (in)	Tenon	Wall Thickness (in)	Wt. (lbs)	90 MPH		100 MPH		110 MPH		120 MPH		150 MPH		Anchor Bolt Dia. (in)
							Max EPA (sq ft)	Max Load (lbs)	Max EPA (sq ft)	Max Load (lbs)	Max EPA (sq ft)	Max Load (lbs)	Max EPA (sq ft)	Max Load (lbs)			
KM90-A-10-FE	10	5.25	5.25	3.5" x 3.5"	0.25	46	16.8	500	13.3	500	10.7	500	8.8	500	5.2	500	0.75
KM90-A-11-FE	11	5.25	5.25	3.5" x 3.5"	0.25	50	14.7	500	11.6	500	9.3	500	7.6	500	4.4	500	0.75
KM90-A-12-FE	12	5.25	5.25	3.5" x 3.5"	0.25	55	12.9	500	10.1	500	8.1	500	6.6	500	3.7	500	0.75
KM90-A-13-FE	13	5.25	5.25	3.5" x 3.5"	0.25	59	11.4	500	8.9	500	7.1	500	5.7	500	3.1	500	0.75
KM90-A-14-FE	14	5.25	5.25	3.5" x 3.5"	0.25	64	10.1	500	7.8	500	6.1	500	4.9	500	2.6	500	0.75
KM90-A-15-FE	15	5.25	5.25	3.5" x 3.5"	0.25	69	8.9	500	6.8	500	5.3	500	4.1	500	2.1	500	0.75
KM90-A-16-FE	16	5.25	5.25	3.5" x 3.5"	0.25	73	7.8	500	5.9	500	4.5	500	3.5	500	1.6	500	0.75
KM90-A-17-FE	17	5.25	5.25	3.5" x 3.5"	0.25	78	6.8	500	5.0	500	3.8	500	2.9	500	1.2	500	0.75
KM90-A-18-FE	18	5.25	5.25	3.5" x 3.5"	0.25	82	5.8	500	4.2	500	3.1	500	2.3	500	0.8	500	0.75

RE ALUMINUM // Shaft Details

Catalog Number	Ht. (ft)	Butt (in)	Tip (in)	Tenon	Wall Thickness (in)	Wt. (lbs)	90 MPH		100 MPH		110 MPH		120 MPH		150 MPH		Anchor Bolt Dia. (in)
							Max EPA (sq ft)	Max Load (lbs)	Max EPA (sq ft)	Max Load (lbs)	Max EPA (sq ft)	Max Load (lbs)	Max EPA (sq ft)	Max Load (lbs)	Max EPA (sq ft)	Max Load (lbs)	
KM90-A-10-RE	10	4.5	4.5	3.5" x 3.5"	0.25	39	15.7	500	12.3	500	10.0	500	8.3	500	5.1	500	0.75
KM90-A-11-RE	11	4.5	4.5	3.5" x 3.5"	0.25	43	13.6	500	10.6	500	8.6	500	7.1	500	4.3	500	0.75
KM90-A-12-RE	12	4.5	4.5	3.5" x 3.5"	0.25	47	11.9	500	9.2	500	7.4	500	6.0	500	3.6	500	0.75
KM90-A-13-RE	13	4.5	4.5	3.5" x 3.5"	0.25	51	10.3	500	8.0	500	6.2	500	5.1	500	3.0	500	0.75
KM90-A-14-RE	14	4.5	4.5	3.5" x 3.5"	0.25	55	9.0	500	6.8	500	5.3	500	4.3	500	2.5	500	0.75
KM90-A-15-RE	15	4.5	4.5	3.5" x 3.5"	0.25	59	7.8	500	5.8	500	4.5	500	3.6	500	2.0	500	0.75
KM90-A-16-RE	16	4.5	4.5	3.5" x 3.5"	0.25	63	6.9	500	5.3	500	4.0	500	3.2	500	1.7	500	0.75
KM90-A-17-RE	17	4.5	4.5	3.5" x 3.5"	0.25	67	6.1	500	4.3	500	3.3	500	2.5	500	1.3	500	0.75
KM90-A-18-RE	18	4.5	4.5	3.5" x 3.5"	0.25	71	5.2	500	3.5	500	2.5	500	1.9	500	0.9	500	0.75

6-13-2020