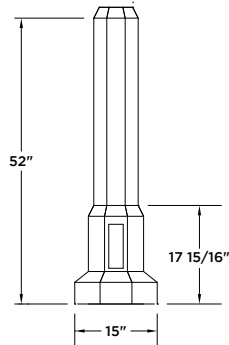
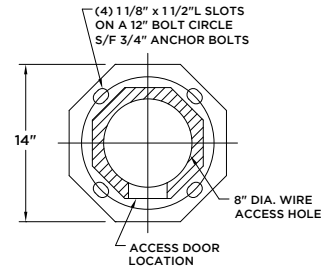


Decorative Base:



Baseplate:



Specifications:

Pole Shaft:

Available as a one-piece heavy walled cast aluminum octagonal pole with a 0.20" per foot taper.



Octagonal Cross Section

Pole Height	Tip Width (flat to flat)	Pole Weight (lbs)
10'	5"	134
13'	4 3/8"	153
15'	4"	165

Decorative Base Cover:

Two piece aluminum clam shell.

Finish:

Available in textured or smooth.

Options:

- GFI** > Ground Fault Receptacle
- BA** > Banner Arms
- FPH** > Flower Pot Holder
- FH** > Flag Holder

How to Order:

POLE STYLE

KM96FC - The Classic

HEIGHT OPTIONS

10', 13', 15'

KM96FC

- **A**

- []

- []

MATERIAL OPTIONS

A - Aluminum

PAINT COLOR

GN - Federal Green, BE - Blue, GY - Gray,
BN - Brown, BK - Black, BZ - Bronze

*Additional options available on website

2-12-2020