

# Round Non-Tapered // Aluminum

Small Cell Pole



**King Luminaire**

## POLE SPECIFICATIONS

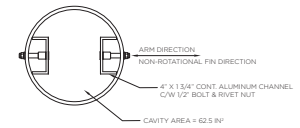
**MATERIAL:**  
Round Extruded (RE)  
non-tapered Aluminum

**ALLOY:**  
6061-T6

**POLE HEIGHT:**  
28' Above Grade

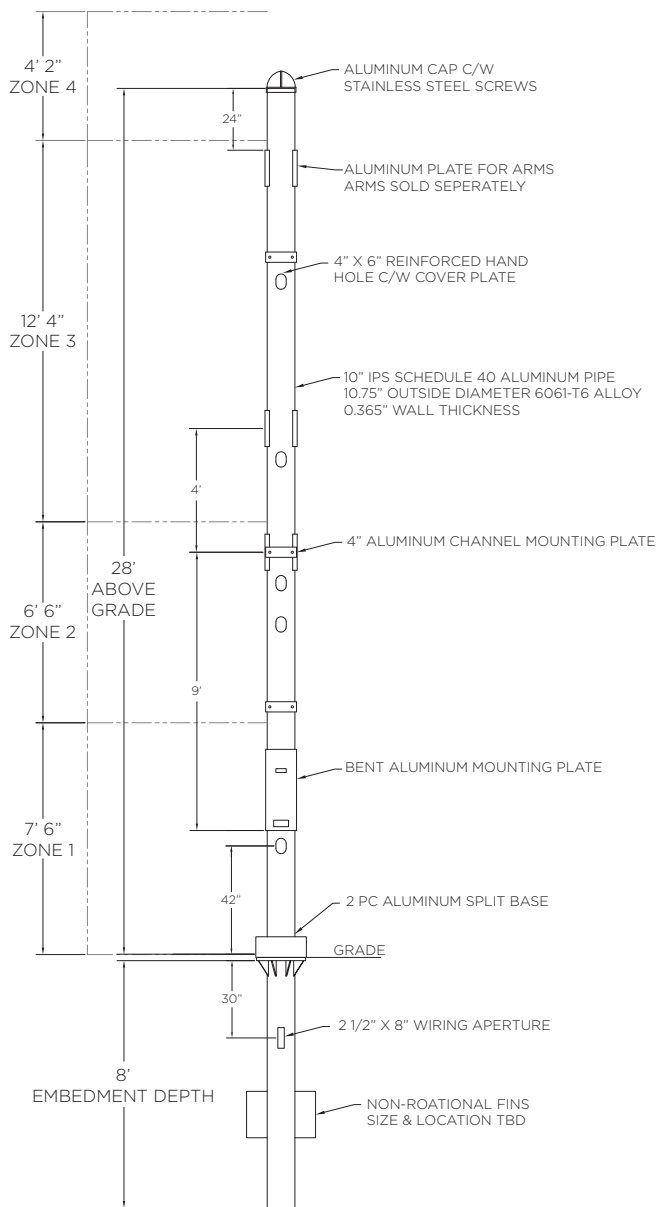
**FINISH:**  
Available in textured  
or smooth.

**CROSS SECTION:**



Top View

**DESIGN PARAMETERS:**  
Designed specifically to hold small cell equipment with a wider, fixed raceway while creating harmony between the Utility and the Telecom companies who are using the pole.



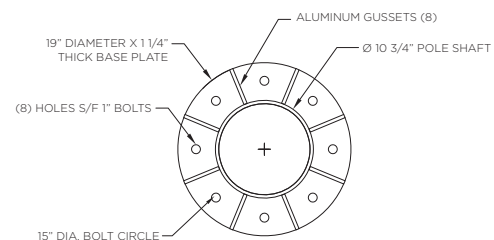
## MEASUREMENTS

Height Above Grade (ft.)	Catalog Number	Ht (ft)	Tip (in)	Butt (in)	Min. Raceway (in)
28	KMSC-10-RE-A-36	36	10	10	6.5

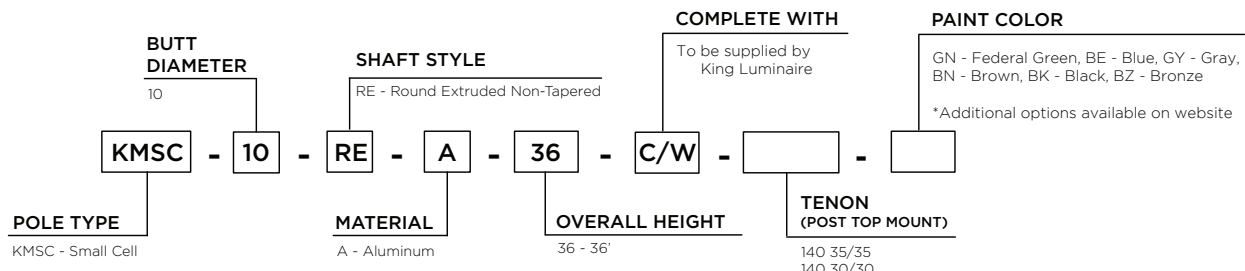
## BASEPLATE DETAILS

Pole		Bolt Circle	Baseplate	
Butt Diameter (in)	Wall Thickness (in)	Dia. (in)	Circle (in)	Thickness (in)
10.75	0.365	15	19	1.25

### BASEPLATE DETAILS:



## HOW TO ORDER



**Zonal Loading:**

The zonal loading of the pole distributes the EPA & Weight of small cell equipment based on the typical mounting locations. Zone 1 covers the area from the ground plane to 7' 6" above grade, Zone 2 covers the area from 7' 6" above grade to 14' above grade, Zone 3 covers a variable area, based on the overall pole height, and Zone 4 covers the top 10% of above grade height, plus 2' above the tip of the pole to accommodate post top equipment. The pole has been engineered to support the following EPAs and load.

120 mph // AASHTO LTS-6

Height Above Grade (ft.)	Option	Zone 1			Zone 2			Zone 3			Zone 4		
		Max EPA (sq ft)	Max Load (lbs)	Location (ft)	Max EPA (sq ft)	Max Load (lbs)	Location (ft)	Max EPA (sq ft)	Max Load (lbs)	Location (ft)	Max EPA (sq ft)	Max Load (lbs)	Location (ft)
28	Option 1	4	50	0-7.5	8.1	215	7.5-14	15.2	380	14-26.33	18	280	26.33-30.5
	Option 2	6	75	0-7.5	9.6	290	7.5-14	15.7	405	14-26.33	16	260	26.33-30.5
	Option 3	8	100	0-7.5	11.6	390	7.5-14	16.2	430	14-26.33	14	240	26.33-30.5

145 mph // AASHTO LTS-6

Height Above Grade (ft.)	Option	Zone 1			Zone 2			Zone 3			Zone 4		
		Max EPA (sq ft)	Max Load (lbs)	Location (ft)	Max EPA (sq ft)	Max Load (lbs)	Location (ft)	Max EPA (sq ft)	Max Load (lbs)	Location (ft)	Max EPA (sq ft)	Max Load (lbs)	Location (ft)
28	Option 1	2	25	0-7.5	7.6	190	7.5-14	15.2	380	14-26.33	7.8	200	26.33-30.5
	Option 2	4	50	0-7.5	8.6	240	7.5-14	15.7	430	14-26.33	6.2	180	26.33-30.5
	Option 3	6	75	0-7.5	9.6	290	7.5-14	16.2	455	14-26.33	4.8	160	26.33-30.5

**Equipment Loading:**

Typical equipment loading by zone

**Zone 1**

- Power/Fiber Disconnect
- Load Center
- Proposed Meter

**Zone 2**

- Cabinet
- Street Sign
- Pedestrian Arm/Luminaire (Potential)

**Zone 3**

- Roadway Arm/Luminaire
- Pedestrian Arm/Luminaire

**Zone 4**

- 2-3 Radio Units
- Antenna