

# TAPERED OCTAGONAL CONCRETE SMALL CELL POLE



Complete the form with your specifications and submit to [sales@scgrp.com](mailto:sales@scgrp.com)

POLE INFORMATION			
Total Pole Length "A"	Pole Length (Above grade) "H"	Tip Size (I.D.) "B"	Butt Size (I.D.) "C"
Octagonal (Direct Embedded)			
40'	34'	2"	5"
45'	39'	2"	5.625"
50'	43'	2"	6.25"
Octagonal (Base Plate)			
38' - 40'	38' - 40'	2"	5"
48' - 50'	48' - 50'	2"	6.25"

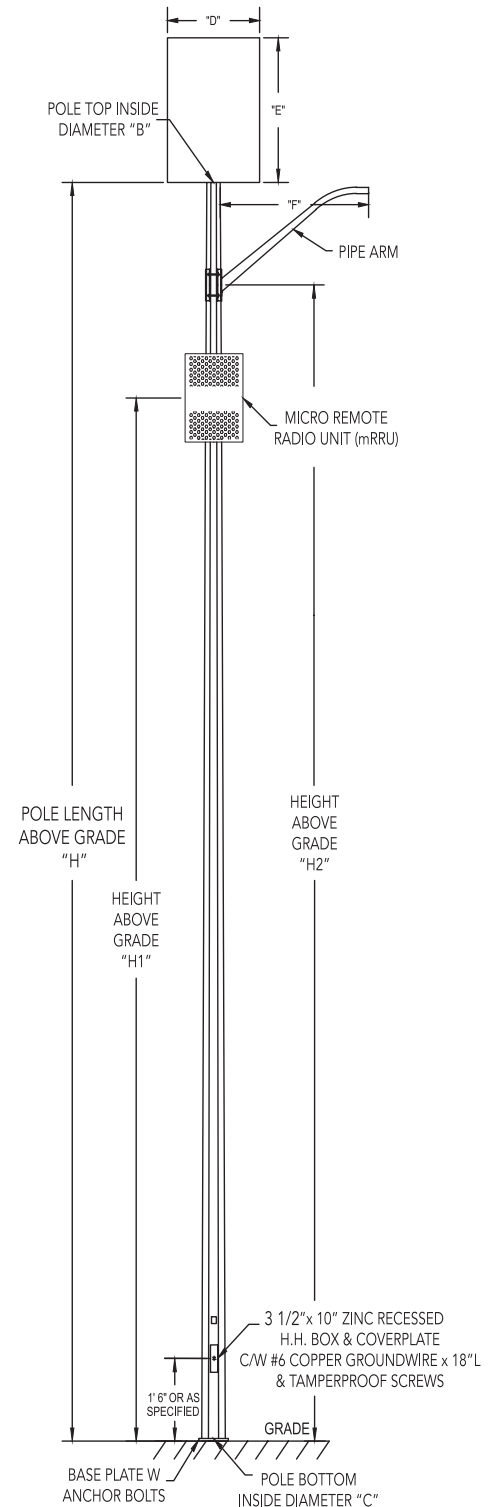
POLE ANTENNA MOUNT INFORMATION		
Antenna Diameter "D"	Antenna Height "E"	Weight

POLE ARM INFORMATION		
Number of Arms	Arm Length "F"	Height Above Grade "H2"

MICRO REMOTE RADIO UNIT (mRRU)					
Number of Units	Unit Weight	Unit Width	Unit Sq. Ft. (EPA)	Height Above Grade "H1"	Orientation

HANDHOLES			
Quantity	Size of Access Needed	Height Above Grade	Product Weight

OTHER ATTACHMENTS OR ACCESSORIES			
Product Description	Product Sq. Ft.	Height Above Grade	Product Weight



**Note:** Minimum tip raceway may vary depending on pole class and length. Please contact StressCrete Group to determine a pole raceway sufficient to satisfy the application.